



**Visit our new showroom's at:**

Shop L10, Arbor Crossing, Corner Oppenheimer  
Road & Arbour Road, Amanzimtoti.

**Tel: (031) 904 5058**

Shop 28, Kings Road, Pine Walk Centre,  
Pinetown.

**Tel: (031) 702 7691 / 2**

Head Office: 15 Suzuka Road Westmead.

P.O. Box 15102, Westmead, 3608.

E.Mail: [gastrek@cybertrade.co.za](mailto:gastrek@cybertrade.co.za)

Fax: (031) 700 5887

**Tel: (031) 700 3006**



website: [www.gastrek.co.za](http://www.gastrek.co.za)

How to care for your  
**LPG Appliance**

We supply & deliver gas  
within 24 hours to your door!

## LPG: THE FUEL

Braai enthusiasts, campers and chef's know that LPG can be an efficient fuel for cooking, lighting and refrigeration. But you should also be aware that the careless use of LPG or LPG-burning appliances can be a hazard.

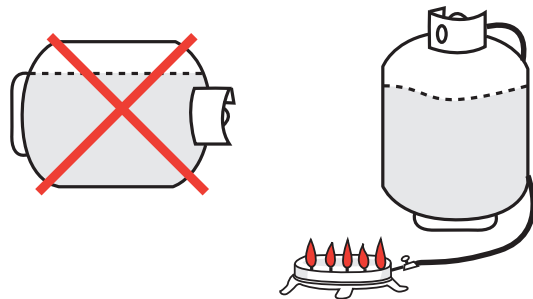
## IS LPG DANGEROUS?

Used with care, LPG is a safe and convenient fuel. LPG gas is not toxic. However, it can cause suffocation in a confined space.

LPG vapours are heavier than air and have a tendency to gather in low lying areas.

LPG has a very distinctive odour that is generally associated with boiled cabbage or rotten eggs. This odour is put in for your protection. Even the smallest leak is detectable to the nose.

LPG is stored as a liquid but used as a vapour. The cylinder must be kept upright.



It is absolutely essential that all LPG water heaters are fitted with a (flue) chimney. This is a requirement by law. A flexible or solid pipe should be fitted to the flue socket with a gas tight connection. The external end of the flue should be fitted with some form of wind/rain protection device.★

### General safety tips for the use of LPG and appliances:

Always read and understand the manufacturer's instructions.

All installations, maintenance and removals must be undertaken by a qualified and registered installer

Ensure the appliance conforms to the SANS 1539 Standard - A list can be found on the LPGSASA website

### If you smell gas:

- Immediately extinguish any naked flames
- Turn off the gas at the source
- Open all doors and windows to ventilate the room
- Do not operate electrical switches
- Do not telephone from inside the danger area
- From outside of the room, call either your gas company or your approved dealer or registered installer. If it is necessary to call the fire department, tell them there is LPG involved.



## LPGAS WATER HEATING SYSTEMS

Installed and used correctly, an LPGas water heater (instantaneous gas geyser) provides endless, piping hot water in an instant and, at a very competitive price.

It is vitally important, however, that the initial installation is done professionally and that regular service and maintenance intervals are followed.

### Some advice on the installation and maintenance of your LPGas water heater.

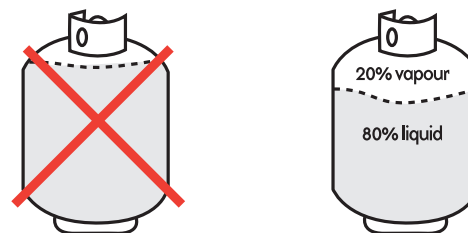
By law, an LPGas water heater may only be installed by a certified installer. This applies to the maintenance and removal as well.

Any local bye-laws and regulations, including approval by the local Fire Department where necessary, must be observed.

The appliance must be fitted in a well ventilated room. Any appliance which operates with a naked flame consumes oxygen from its surroundings, therefore, adequate ventilation is essential.

**Liquid** LPG is very cold. Contact with skin may cause frost bite.

It is imperative that cylinders be filled to 80% capacity (but no more) to allow for expansion.



When LPG burns, the products of combustion it produces are carbon dioxide, water vapour and heat. You are breathing these out right now.

However, there are two items that are essential for these harmless products of combustion.

1. Equipment that is properly maintained and serviced.  
Sufficient air for combustion



## LPG BRAAI SAFETY TIPS

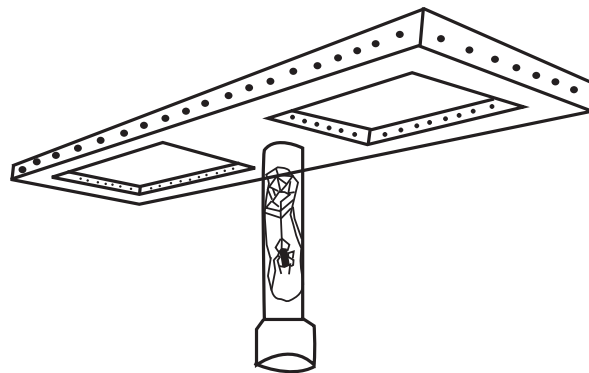
LPG braai's have become a year long source of enjoyment and tasty meals. They are easy to handle, easy to control, come in all shapes and sizes and the taste of the food is as good as that cooked on a charcoal braai.

While LPG braai's are cleaner, cheaper and faster than charcoal braai's, they do require some maintenance and a few very basic precautions.

A little extra care and these simple precautions should ensure the safe and enjoyable operation of your barbecue.

When assembling the unit, follow the manufacturer's instructions carefully. If in doubt, take it back to the dealer or call a qualified service person.

1. Make sure the burner ports are free of rust or dirt and that the burner throat is clear of dust or cobwebs.



## LPG APPLIANCES

When you purchase an appliance, be sure that it is certified and that it carries the following logo:

Liquefied Petroleum Gas Safety Association of Southern Africa.

Only a certified LPG fitter may lawfully install or remove LPG appliances in your unit.

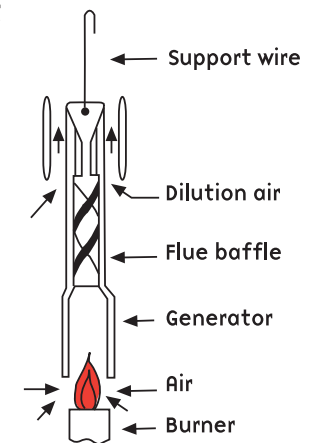
You can check for registered installers and suppliers on their website: [www.lpgas.co.za](http://www.lpgas.co.za)  
contact: 011 -8869702

### LPG Refrigerators

Your LPG refrigerator will provide years of quality trouble free service.

However, the burner and flue may become blocked or ineffective if the refrigerator has been moved, has been turned off, or after one year of use. This may result in carbon monoxide being produced.

Minimize the possibility of **any** problem by having a trained technician inspect and clean your refrigerator once a year.



## EMERGENCY ACTION

While LPG equipment is very safe, sometimes incidents occur due to carelessness or neglect. The following safety precautions should be observed.

### LPG Leak

1. Turn off the cylinder valve.
2. Tell people to leave the immediate area.
3. Eliminate all sources of ignition. (i.e extinguish open flames. Do not turn a light switch 'ON' or 'OFF').
4. Let the area ventilate for a few minutes.
5. Search out the leak with soap and water or call a qualified service person.

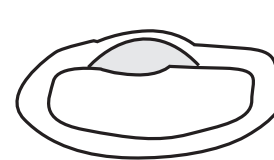
### LPG Fire

1. Tell people to leave the immediate area.
2. Have someone call the fire department.
3. Set your garden hose to spray water **on the cylinder**, if it can be done safely.
4. Do not extinguish the flame unless you can shut off the cylinder.

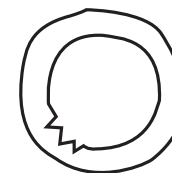
2. Soap test all joints and hose. (see "leak testing")
3. The P.O.L. (put on left) fitting that connects the barbecue hose to the cylinder has a left hand thread. Turn it counter clockwise to tighten.



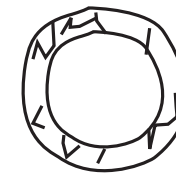
4. If your P.O.L fitting has an 'O' ring, check it every time you connect the cylinder. It requires replacement if it is:



Out of round



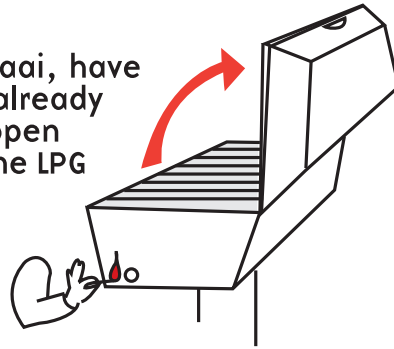
Torn



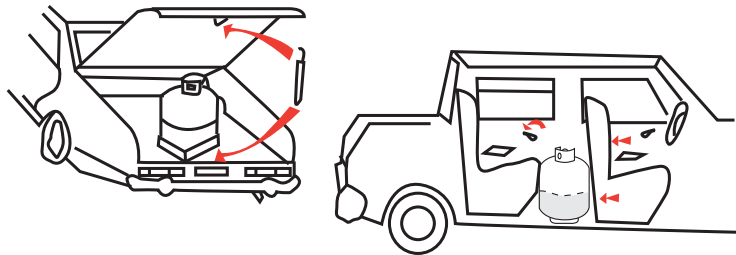
Cracked



5. When lighting your braai, have the match or lighter already burning with the lid open before you turn on the LPG at the barbecue.



6. Never move the braai when it is lit.
7. Each time, turn off both the braai 'ON/OFF' VALVE and the cylinder valve.
8. Use gas grills outdoors only.
9. Store LPG cylinders outdoors only.
10. Transport the cylinder upright and secured in a ventilated area. (i.e. cylinder jammed on rear floor, passenger side and with window open or secure cylinder in the boat).



11. Whenever a cylinder is not connected to an appliance, the valve must be completely turned off.



## LEAK TESTING

After changing cylinders or making hose connections, all connections **must** be checked for leaks as follows:

1. Make up a solution of dishwashing soap and water.
2. Leave the braai's valve off and the cylinder valve on.
3. Spread the soapy solution generously on all fittings and the hose.
4. If bubbles appear and become larger or increase in number then you have a leak.
5. **Never** check for leaks with an open flame.

All gas leaks, especially in a confined area must be repaired immediately or the gas supply shut off immediately.

